




Call for Price

6511 W Donatella St
Eagle, ID 83616


Floor Plan: Shearwater Bonus

Community: Legacy

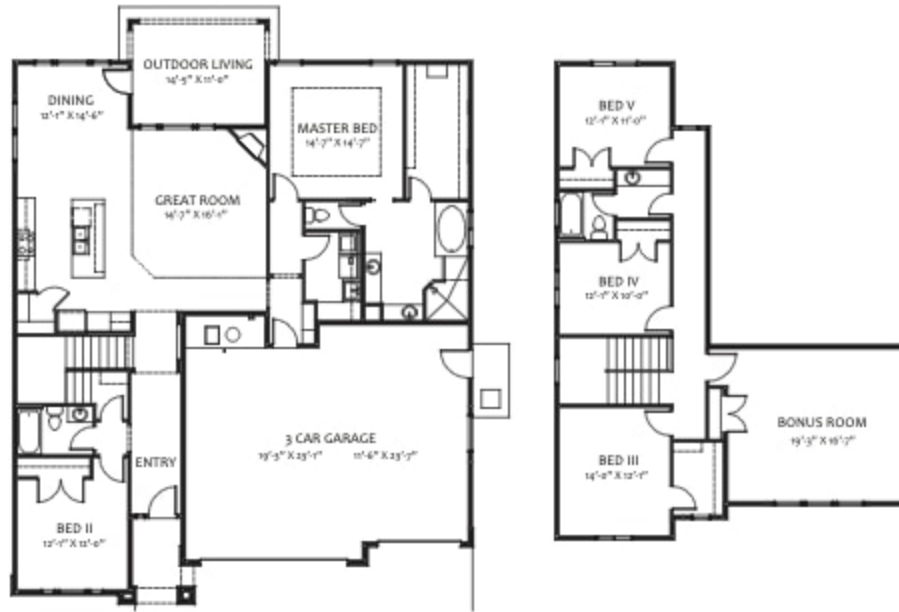
 3,000 Sq. Ft.

 5 Bedrooms

 3 Bathrooms

 3 Car Garage

Photos Similar A large two-story beauty, the Shearwater Bonus is a home fit for a family. Five bedrooms and three bathrooms, as well as a three car garage, means there is plenty of space for family, friends and storage. With a fireplace and large windows to bring in the sunlight, the stunning open kitchen, dining and living area is a welcoming gathering spot for everyone. The owner's suite is secluded downstairs, separated from one bedroom, while three more bedrooms and bonus room live upstairs. Perfect for a large family, those who enjoy entertaining or those who just love having space, the Shearwater Bonus is not only lovely to view, but pleasant to live in.



Actual floor plan may vary from pictured plan. Areas and dimensions are approximate. See Sales Team for list of included features.